



20th Anniversary of Probus Parish Players

Presents

# CINDERELLA



Wed 15<sup>th</sup> ~ Sat 18<sup>th</sup>  
February 2012



# C. Poore & Sons Ltd

*BUILDING CONTRACTORS*

Mengarth, Fore Street, Probus. TR2 4LQ

*For a complete Building Service,  
including*

*Re-Roofing*



*Conversions*



*Extensions*



*Grant Work*



*Painting & Decorating*



*Kitchen & Bathroom Fitting*



*uPVC Windows*



*Tiling, etc.*

*FREE QUOTATIONS*



Telephone - 01726 882544

Fax - 01726 882548



Registered  
House Builder





## *A Warm Welcome From Our Chairperson*

*On a dreary evening in May last year, my family found itself in front of the television watching a DVD of our last show. We all agreed that we missed the 'buzz' of pantomime. A few phone calls later and we quickly realised we weren't alone. An open meeting was advertised for anybody who was interested in seeing pantomime return to Probus and we were overwhelmed with the response and support.*

*The first ever pantomime performed here was Cinderella, back in 1992 and it seemed fitting that in our 20<sup>th</sup> year we re-visit our original production. Auditions were back in September and again we were delighted the number of individuals that came forward to show off their acting singing and dancing skills.*

*Months later, here we are, you reading this, probably with minutes to go before curtain up the cast are back stage full of nervous excitement, the stage crew are gearing themselves up for some quick scene changes, the band tuning up, the sound and lighting guys doing their final checks. We pride ourselves on putting on a professional show whilst keeping to the roots and core of what a pantomime is. This show is no exception.*

*There are too many people to mention and thank for their contribution in putting together this show, so to all of you - THANK YOU. Finally, to you, our audience, thank you for coming. Enjoy the show.*

**Nick Aldworth**

## **TRUDGIAN FARM**



### **QUALITY TRADITIONAL MEATS PRODUCED NATURALLY**

*The Richards have been farming locally since 1901. Their free range beef, pork and lamb are all born and reared on the farm and fed on grass and homegrown cereals. The vegetables are grown without the use of artificial pesticides or weed killer. There is a Delicatessen stocking a wide range of local cheeses, locally made jams, bread and cakes.*

*The family now in it's fourth generation of farming use traditional methods and are committed to selling their own and local products of the best quality at a fair price.*

Telephone: (01726) 883946  
Probus Square - Tuesday to Saturday inclusive

# PROBUS SCHOOL FILLING STATION LTD

FORE STREET, PROBUS, TRURO - Tel. St. Austell (01726) 882588

Sue, Vikki and their staff wish Probus Parish Players  
every success with their 2012 production of  
"Cinderella"

*Open Seven Days a Week For All Your Needs Inc*

NEWSPAPERS, MAGAZINES, WOOD & COALS, CAR ACCESSORIES,  
GROCERIES, SWEETS, CIGARETTES, CARDS AND GIFTS,  
NATIONAL LOTTERY OUTLET & PAYPOINT OUTLET

OFF LICENCE



Watch Out For Monthly Promotional Offers



MON to SAT, 7 am - 9 pm ; SUN, 8 am - 9 pm

## STUART CHAPMAN

*Builder and Roofing Contractor*

Dorsam House, Fore Street,  
Probus, Truro TR2 4NB

Telephone:  
St. Austell 882952

Mobile:  
07967 809785



MOTOR VEHICLE  
REPAIRERS  
ASSOCIATION

## S. J. GRIGG

PROBUS  
TRURO

Telephone St Austell 882330



### ACCIDENT RECOVERY

CAR SALES, SERVICING, VEHICLE REPAIRS  
ACCIDENT REPAIRS in our RAC APPROVED FULLY  
EQUIPPED BODYWORK SHOP, including  
SPRAY BOOTH, BODY JIG and 4-WHEEL  
ALIGNMENT MEASURING SYSTEM

Please contact us if you are selling or interested in  
purchasing a new vehicle as our stock is always changing

PROPRIETORS: ELAINE AND STUART GRIGG





### *The Directors Bit*

Back in May 2011 the pantomime committee met to discuss the possibilities of bringing Panto back to Probus for our 20<sup>th</sup> Birthday.

It was a no brainer for me and I was delighted to take on the directors role once more.

Cinderella was the first pantomime performed by PPP so it seemed fitting to revisit this script for our 20<sup>th</sup> birthday. With a few modern additions the rehearsals were soon underway.

The cast this year have been so exciting to work with, full of energy and enthusiasm. I would like to thank everyone for their support, my family having to put up with panto talk 24/7 and the cast and crew putting up with my mad ideas.

This is my 5<sup>th</sup> time as director and I have always managed to sneak in a queen song.....can I manage it this year.....you'll have to wait and see!  
Enjoy the show

STEPHENIE

**MODERN BARS AND FUNCTION SUITES FOR ALL OCCASIONS  
CHRISTENINGS, BIRTHDAYS, ENGAGEMENTS, WEDDINGS ETC  
IN FACT ANY TIME YOU WANT TO ENJOY YOURSELF**

***THE HEART OF THE VILLAGE SINCE 1921 - COME & JOIN US AT:***

## **PROBUS COMRADES CLUB**

**THE CLUB IS FAMILY FRIENDLY *with Fun for Kids of all ages!!***

**HAS ALL THE FACILITIES FOR YOUR PARTY NEEDS**

**SPORTS ON BIG SCREEN TV. QUIZ NIGHTS. GAMES NIGHTS.**

**BOOK A SEPARATE FUNCTION SUITE FOR UP TO 100 GUESTS**

***OR JUST RELAX WITH FRIENDS IN ONE OF OUR BARS***

**The most modern Licensed Function Suites between Truro and St Austell - and we're  
right here on your doorstep!!**

**Open 7 Days a week - *New Members are very welcome* - Check our prices!!**

**Membership is open to all. Juniors from 16-18 and Families are especially  
welcome - so come along and check us out, we look forward to seeing you.**

**How to find us: *Entrance is in High Street, opposite the Chip Shop.***

**Bring This Programme To Claim Your Introductory Free Drink**

**One drink per Programme**



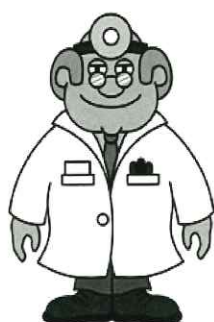
## Probus Surgery

"Committed to the NHS"



At **PROBUS SURGERY** the doctors and nurses take pride in offering the highest standard of patient-centred healthcare. We run many clinics for chronic disease care and offer a wide variety of other medical services.

In addition to our main site at Probus Surgery, we also have 4 branch sites in Grampound, Tregony, The Merlin Centre (Hewas Water) and Summercourt. Most sites have disabled access and facilities which help maintain ease of access for patients with limited mobility. For more information visit [www.probusurgery.co.uk](http://www.probusurgery.co.uk) or phone 01726 882745



'Doctor, doctor' says a patient. 'I can't stop singing, "The Green, Green Grass of Home."' 'That sounds like Tom Jones Syndrome,' says the doctor. 'Is it common?' asks the patient. The doctor replies, 'It's not unusual'.

## Probus Surgical Centre

"Providing NHS Services"



**PROBUS SURGICAL CENTRE** has been providing NHS specialist day case surgery since 1995 and offers NHS assessment and surgery under local anaesthetic, operations include hernias, carpal tunnels, vasectomy, trigger finger and skin surgery. For more information visit [www.probusurgicalcentre.co.uk](http://www.probusurgicalcentre.co.uk) or phone 01726 885104

"Doctor, doctor, will I be able to play the violin after the operation?"  
"Yes, of course..."  
"Great! I never could before!"



# How It All Started The Original Cast Of Cinderella Performed In 1992



## 1992 PRODUCTION - CINDERELLA

### Back Row L to R

Anne Du Pille (Wardrobe), Jim Whitlock (Vicar), Mike Saker, Andrew Miller, Lionel Trevail (Stage Manage), Ray Schofield, Paul Edwards, Nick Barber (Director), Nigel Schofield, Peter Beland.

### Third Row L to R

Val Wilcox, Jenny Townsend, Jeff Townsend, Liz Townsend, Andrew Stevenson, Mary Stevenson, Richard Schofield, Sylvia Wisdom, Tony Wisdom, Nicky Rivers, Fleur Allen, Kitty Booker, Bea Geddes, Bertie Harris, Julie Kennedy.

### Second Row L to R

Caroline John, Judith Williams, Sarah Edwards, Caroline Williams, Katie Round, Vicky Trevail, Ailsa Goodson, Janet Bogen, Jill Saker, Maralyn Mayger, Mary Round.

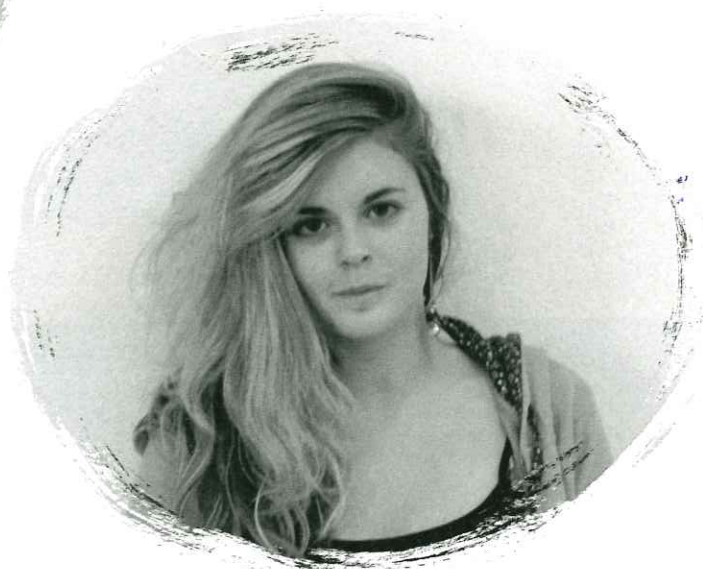
### Front Row L to R

Jayne Chase, Frances Du Pille, Lisa Beland, Louise Townsend, Mark Beland, Heidi Trevail, Jessica Bray, Tom Round, Wayne Trevail.





*Devon Aldworth*  
*(Buttons)*



*Verity Annear*  
*(Cinderella)*



仙人洞

## Eastern Promise

CANTONESE, PEKING,  
THAI STYLE, SZECHUAN  
CUISINE

Fully Licensed      Air Conditioned

**Take away now available**  
**From 5.30pm**

**Restaurant Open 6pm - 11pm**

**St. AUSTELL (01726) 883033**

1 Moor View, Grampound.  
between Truro and St. Austell





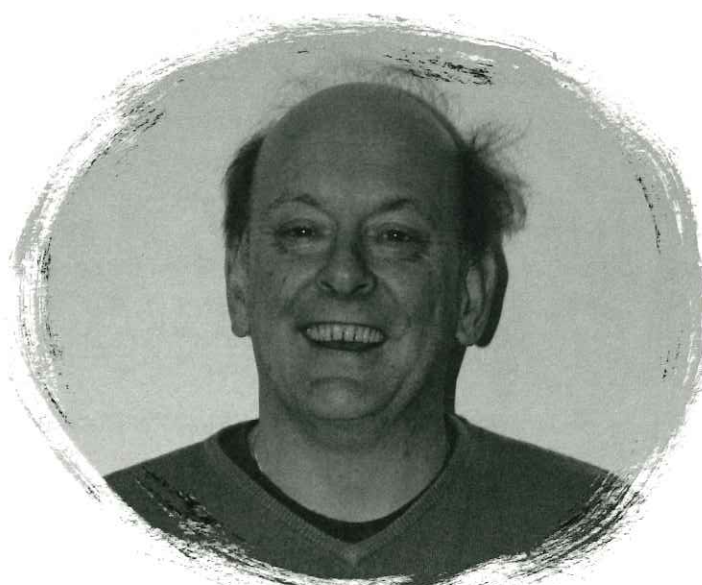
***Guy Wignall  
(Asphyxia)***



***Paul Annear  
(Euthanasia)***



***Jenna Richardson  
(Baroness Hardupp)***



***Alan Nicholls  
(Baron Hardupp)***



Motor Vehicle Servicing & Repairs  
Diagnostic & Fault Finding On Most vehicles  
Air Conditioning Serviced & Recharged  
Car & Motorcycle Tyres Supplied & Fitted  
Lazer Four-Wheel Alignment

Unit 2-3 Tresillian Business Park  
Probus  
Truro  
TR2 4HF

Tel: 01872 520654

Fax: 01872 520670

Email: [service@collinsofprobus.co.uk](mailto:service@collinsofprobus.co.uk)

[www.collinsofprobus.co.uk](http://www.collinsofprobus.co.uk)

Mx-5 Specialists

Car & Motor Cycle MOT Testing Station

## **CINDERELLA WORD SEARCH**

S	W	R	E	M	M	A	R	T	E	Y	U
V	G	H	P	R	I	N	C	E	C	M	S
I	H	P	A	N	T	O	M	I	M	E	R
N	C	I	O	R	P	A	N	D	G	N	E
I	G	E	K	Y	D	D	S	W	E	E	T
D	A	N	C	E	E	U	G	G	L	Y	S
N	S	B	A	R	O	N	P	G	X	G	I
A	S	F	E	Y	V	D	F	P	N	A	S
D	I	L	R	U	S	D	G	O	K	I	O
O	L	I	P	S	N	O	T	T	U	B	S
A	A	L	U	A	P	M	A	E	R	C	H
F	O	G	O	D	M	O	T	H	E	R	J

Pantomime  
Dance  
Sing  
Sisters  
Domo  
Gus  
Fairy

Cinderella  
Dandini  
Baron  
Ammer  
Ice  
Sweet  
Godmother

Dame  
Buttons  
Hardupp  
Tongs  
Cream  
Prince



### **ELECTRICAL AND SECURITY CONTRACTORS**

Chapel Hill, Sticker, St Austell, PL26 7HG - Fax (01726) 68967 or 65690

[WWW.waldons.co.uk](http://WWW.waldons.co.uk)

COVERING ALL OF CORNWALL

Electrical: (01726) 65635 & 66552

Security: (01726) 65636

Specialists in: Electrical, Security and Data design, installation and  
maintenance including - All Electrical systems, Fire alarm, Intruder  
alarm,

CCTV, Door entry, TV, Full Hardwiring & PAT testing.



REGISTERED MEMBER



**ssaib**



# SYNOPSIS

## CINDERELLA

*The arrival of the Baron's new wife, suitably named Medusa and her two horrific daughters; their maltreatment of Cinderella; the faithful Buttons; Cinderella's kindness to the old woman, who turns out to be the Fairy Godmother; the romance of the Ball and the handsome Prince; the doom of the striking clock; the hunt for the slipper's owner; the denouncement and Cinderella's generous forgiveness; the broker's men carried off by the Ugly Sisters; the Grand Finale.*

***Enjoy!!***

## SYNOPSIS OF SCENES

### **Act One**

<b>Scene 1</b>	<i>The Village of Merrivale</i>
<b>Scene 2</b>	<i>A Path in the Woods</i>
<b>Scene 3</b>	<i>A Wooded Glade</i>
<b>Scene 4</b>	<i>Stoneybroke Mansion</i>
<b>Scene 5</b>	<i>The Kitchen of Stoneybroke Mansion</i>

### **Act Two**

<b>Scene 1</b>	<i>Outside Castle Glamorous</i>
<b>Scene 2</b>	<i>The Ballroom of Castle Glamorous</i>
<b>Scene 3</b>	<i>On the way home from the Ball</i>
<b>Scene 4</b>	<i>The Kitchen of Stoneybroke Mansion</i>

***The Grand Finale***





# PROBUS PARISH PLAYERS PRESENTS

## Cinderella

By Norman Robbins



### The Cast

#### The Players

Buttons  
Cinderella  
Baron Hardupp  
Baroness Hardupp  
Asphyxia  
Euthanasia  
Ammer  
Tongs  
Prince Charming  
Dandini  
Fairy Godmother  
Toast Master  
Gus Gus  
Giselle  
Jaques  
Flopsy  
Nuts

Page To Baron Hardupp  
The Baron's Daughter  
Of Stoneybroke Mansion  
His New Wife  
One Of Her Daughter's  
Her Other Daughter  
A Broker's Man  
The Other Broker's Man  
Of Castle Glamorous  
Squire To The Prince  
A Kindly Fairy  
Master Of Ceremonies  
A Male Mouse  
A Female Mouse  
A Mouse  
A Rabbit  
A Squirrel

Devon Aldworth  
Verity Annear  
Alan Nicholls  
Jenna Richardson  
Guy Wignall  
Paul Annear  
Anthony White  
Kevin Blayney  
Beth Pritchard  
Megan Russell  
Julie Kennedy  
Robert Woolcock  
Rachel Baker  
Gill Oakley  
Hannah Lawrence  
Charlotte Crutcher  
Kaitli Spear

#### Senior Chorus

Kara Aldworth. Karen Arnold. Megan Arnold. Ann Mason. Talia Mason.  
Angie Nicholls. Sophie Baker. Emily Adams. Kayleigh Bishop. Debbie Bird.  
Sophie Rice & Megan Levertton

#### Junior Chorus

Rebecca. Louise. Amy. Emma. Emelia. Jasmin. Lottie. Amy. Shelley. Jodie.  
Madison & Elouise.

### Musical Numbers

#### ACT ONE

Dancing In The Street  
I Got A Feeling  
Hot Stuff  
Love Is In The Air  
Funky Town

9-5  
Bibbidy Bobbidy Boo

Buttons. Dandini & Senior Chorus  
Buttons. Dandini & Senior Chorus  
Uglies. Ammer & Tongs  
Cinderella. Prince Charming & Senior Chorus  
Gus Gus. Giselle. Jaques. Nuts. Flopsy &  
Junior Chorus  
Cinderella. Giselle & Senior Chorus  
Fairy Godmother & Junior Chorus

#### ACT TWO

Bad Romance  
Bright Side Of Life  
Voulez Vous  
Swan Lake  
Community Song

Baroness Hardupp  
Buttons. Ammer & Tongs  
Main Cast & Senior Chorus  
Uglies

### Grand Finale

Full Company



# WE HAD SOME FUN REHEARSING

SOME OF THE CAST  
FROM 2012



MUMMY HELP



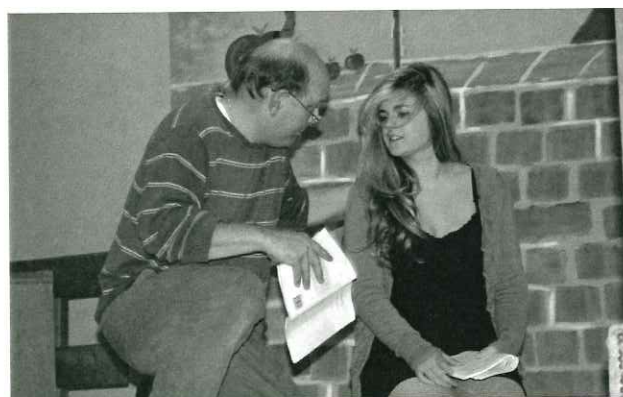
WHAT A SONG



DON'T BE SILLY DADDY



THAT'S MY GIRLS



WHAT COMES NEXT?

## THE HAWKINS ARMS

Best of luck to Probus Parish Players with their Production of  
**Cinderella**

From Derek, Joan and all the Staff

FORE STREET, PROBUS  
TRURO,  
CORNWALL  
TEL: 01726 882208

See Boards For  
Daily Specials

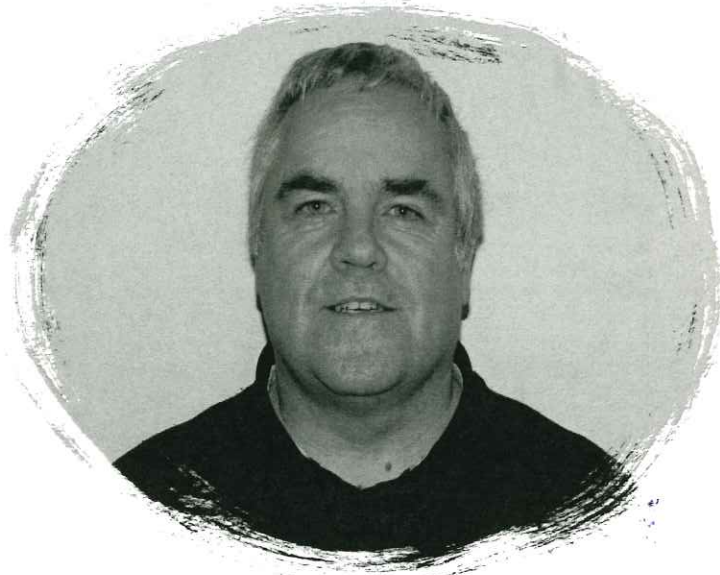
BED & BREAKFAST  
EN SUITE  
BREAKFASTS LUNCHES  
EVENING MEALS  
BOOKING ADVISABLE

**CORNWALL COUNTY COUNCIL CHEFS GOLD AWARD WINNER 2011**

Sunday Lunches Bookings Advisable  
Pool, Darts, Euchre And Traditional Pub Games.



*Anthony White*  
*(Ammer)*



*Kevin Blayney*  
*(Tongs)*



*Megan Russell*  
*(Dandini)*



*Beth Pritchard*  
*(Prince Charming)*

**J. K. Electrical & JK Coaches**  
**Including 16 Seat Mini Bus Hire**  
**24 hr - Call Out or Dreckly**

Telephone/Fax 01726883529    Mobile 07785367734





***Julie Kennedy***  
***(Fairy Godmother)***



***Robert Woolcock***  
***(Toast Master)***



***Rachel Baker***     ***Jill Oakley***  
***(Gus Gus)***         ***(Giselle)***



***Charlotte Kaitlin Hannah***  
***(Flopsy) (Nuts) (Jaques)***



## **FAL VALLEY** ***PETS***



PET FOODS & ACCESSORIES

FAL VALLEY TANNERY • GRAMPOUND • TRURO • CORNWALL

**TELEPHONE & FAX 01726 883988**

- ☑ Extensive range of Pet Foods and Accessories
- ☑ Collars, Leads, Toys, Treats, Grooming, Medicinal . . . and over 200 Dog and Cat Beds in stock
- ☑ Very competitive prices
- ☑ Stockists of *Forthglade* Pet Meats
- ☑ Large FREE Private Car Park
- ☑ Regular deliveries (please ring for details)
- ☑ All enquiries welcome

*Open Monday to Friday, 9 am to 5.30 pm*

*Saturday, 9 am to 5 pm*

**IF WE DON'T  
STOCK WHAT YOU  
WANT . . .  
WE WILL GET IT  
FOR YOU!**



## FISH AND CHIPS

OPENING HOURS TUESDAY - SATURDAY

12pm - 1.30pm and 5pm - 8.30pm

**Tony and Maria Davis**

(01726) 883291

## M A Grigg Country Store

Farming \* Equine \* Clothing \* Smallholders \* Country Pursuits

01726 65656

[www.magrigg.co.uk](http://www.magrigg.co.uk)

Sticker, St Austell, PL26 7JH

## L. A. NOLAN & SON

Interior & Exterior  
Painters & Decorators  
Artex, Tiling etc

Wish Customers Old and New  
A HAPPY NEW YEAR  
and  
thank them for their custom in 2012

01726 883004



LOOKING FOR BLINDS OR SHUTTERS?

Call your local Fitter

## VERNON KEEN BLINDS

Tel: 01872520433  
Mob: 07717833658

Velux and other  
Roof lights a  
Speciality

Wide Range Of Blackout Blinds  
Light Nights Will Soon Be Here!!

# Nisa

**FAYRE 'N' SQUARE**  
**4 CHURCH TERRACE**  
**PROBUS**  
**TEL: 01726 882419**

**MON - SAT 6.30AM 10PM**  
**SUN 8AM - 10PM**

**CHEAPER THAN**  
**THE**  
**SUPERMARKETS**



## HARTS FISH AND CHIP SHOP



The Very Best Of Luck Probus Parish Players  
With Your 2012 Pantomime Production Of "Cinderella"



01726 67096

Telephone Orders Welcome

We use only the finest ingredients to produce quality Products

From Probus take A390 to St. Austell, Just past St. Austell Arts Centre turn left into Truro Road, go through first set of traffic lights, follow the road until the next set of traffic lights then turn left, then first right and we are up on the right.

Bring this advert into us  
and buy cod & chips  
for only £4.50

Offer ends 18th March 2012

	LUNCH TIME	EVENING
MONDAY	CLOSED	CLOSED
TUESDAY	CLOSED	5.00pm - 8.30pm
WEDNESDAY	CLOSED	5.00pm - 8.30pm
THURSDAY	CLOSED	5.00pm - 8.30pm
FRIDAY	12.00pm - 1.30pm	5.00pm - 8.30pm
SATURDAY	12.00pm - 1.30pm	5.00pm - 8.30pm
SUNDAY	CLOSED	CLOSED

## SENIOR CHORUS

*Debbie Bird, Robert Woolcock, Megan Leverton, Sophie Baker, Emily Adams, Kayleigh Bishop, Ann Mason, Sophie Rice, Talia Mason, Kara Aldworth & Angie Nicholls.  
Not In Photo Karen & Megan Arnold*



## BACK STAGE CREW

*Gary Bishop, Gary Baker, David Lightfoot & Paul Rice.  
Out Of Photo: Shaun Spear & Tim Mason*



## THE PURPLE DANCE STUDIO PROBUS



**Graded classes in Classical Ballet from Primary to Advanced  
Lunchtime adults ballet class  
Annual Show for charity**

*For more details, contact: Jennie Musgrove  
Tel/Fax 01726 883111 or e-mail*



## Martin Luscombe Building Contractor

**Martin Wishes  
Probus Parish Players  
The Best Of Luck  
With Their 2012  
Production Of  
Cinderella**

**TRENOWETH, RIDGEWAY,  
PROBUS TR2 4JY  
01726-883686**



# JUNIOR CHORUS



*In Alphabetical Order*

*Amelia. Amy. Amy. Elouise. Emma. Jasmin. Jodie. Lottie. Louise. Madison. Rebecca. Shelley.*

## ASSISTANT DIRECTOR

Rachel Baker

## SPOTS

Paul Durham &  
Jon Arnold

## LIGHTING & SOUND

Torin & Matt



## BALLERINA

Amy Robinson



### CHOREOGRAPHY

*Angie Smith*



### MUSICAL DIRECTOR

*Jess Robinson*

### SCENERY & ART WORK

*Rachel Baker*

*Rachel would like to thank all those  
who have helped*

### THE BAND

*Jess Robinson - Keyboards  
James Robinson - Percussion  
Harry Robinson - Percussion  
Verena Watkiss - Woodwind*

### MAKEUP, HAIR & BACK ROOM GIRLS

*Stephenie Aldworth*

*Steph would like to thank all of those  
who have helped her*

### PROMPT

*Hilary Keam*

### CALLER

*Stephenie Aldworth*

### PROPS

*Kathryn Bishop*

### PROGRAMME

*Alan Nicholls & Mel*

### FRONT OF HOUSE

*Thanks to Helen*

### COSTUMES

*Mel*

*With Apologies to any one we have forgotten  
to mention in this programme*

*Adams & her many  
helpers*

## PROBUS PARISH PLAYERS - COMMITTEE

Chairperson

*Nick Aldworth*

Assistant Chairperson

*Rachel Baker*

Secretary

*Julie Kennedy*

Treasurer

*Alan Nicholls*

*Stephenie Aldworth, Kara Aldworth, Sophie Baker, Shaun Spear and  
Jill Oakley.*





## Thanks to Aussie Marquees

A special thanks to Craig and Jane and the team at Aussie Marquees for all the help with our show.

Aussie Marquees: Penhale Farm, Tregony, Truro,  
Cornwall TR2 4HG Tel 01726 883848

### Shaun Beresford

***Carpentry and Property  
Maintenance***



including  
Tiling/Painting,  
Flooring, Decking

**NO JOB TOO  
SMALL**

**Over 25 years'  
experience**

**Telephone  
01726 882635**

**Mobile  
07816358905**

***45, Hicks Close, Probus***

### Wayne Mankelow

**General Maintenance**

Tel: 01726 76964

Mob: 0777876964

Email: W.RM@VIRGIN.NET

Best Of Luck  
Probus Parish Players  
With Your 2012  
Production of  
Cinderella

# **Tresillian Garden Centre**

## **We are Bigger than you Think**

Offering a wide range of products:

SPRING AND SUMMER BEDDING      PATIO PLANTS

SHRUBS      ANNUALS      PERENNIALS      TREES

HANGING BASKETS AND POTS PLANTED TO ORDER

RESIN ANIMALS      VARIED SELECTION OF POTS      COMPOST      SEEDS

ORGANIC PET FOOD      WILD BIRD SEED AND FEEDING STATIONS

**COMING SOON: GROW YOUR OWN SECTION AND NEW RANGE OF GARDEN POTS AND ACCESSORIES**

Free range local meat: Pork, Beef, Lamb, Turkeys and Ducks in season

Free range eggs      Fruit and Vegetables      Cornish Honey      Local Preserves and Chutneys

Hampers to order

**10% Discount with this programme on Garden Centre Products**

**Contact: 01872 520544**

**[www.tc-gardenmaintenance.co.uk](http://www.tc-gardenmaintenance.co.uk)**

### **T C Garden Maintenance**

For all your garden needs – landscaping, lawn care, strimming, hedge cutting and clearance.....

Friendly professional advice.

**Call Theresa on 01872 520544.**

#### **Floral Fancies**

Qualified florist offering a full florist service from bouquets to weddings and events, delivering to a wide area throughout Cornwall

Floral Fancies trendy hair accessories

Contact Sharon on 07816 961778

[www.floralfancies.org](http://www.floralfancies.org)

10% Discount with this programme

#### **Mary's Tea Rooms**

##### **Home Made Pasties**

Freshly made:

Daily Specials

Sandwiches and Rolls

Soup, Paninis

Jacket Potatoes

and much much more.....

Contact 07549 758569

10% Discount when presenting this programme on eating in.



# Celebrating 20 years



Cinderella, Dick Whittington, Aladdin, Sleeping Beauty, Sinbad the Sailor, Dick Turpin, Frankenstein, Beauty and the Beast, King Arthur, Peter Pan, The Real Wizard of Oz, Mother Goose, Babes in the Wood, Ali Baba and the Forty Thieves, Red Riding Hood Robinson, Crusoe and the Pirates, Jack and Jill.